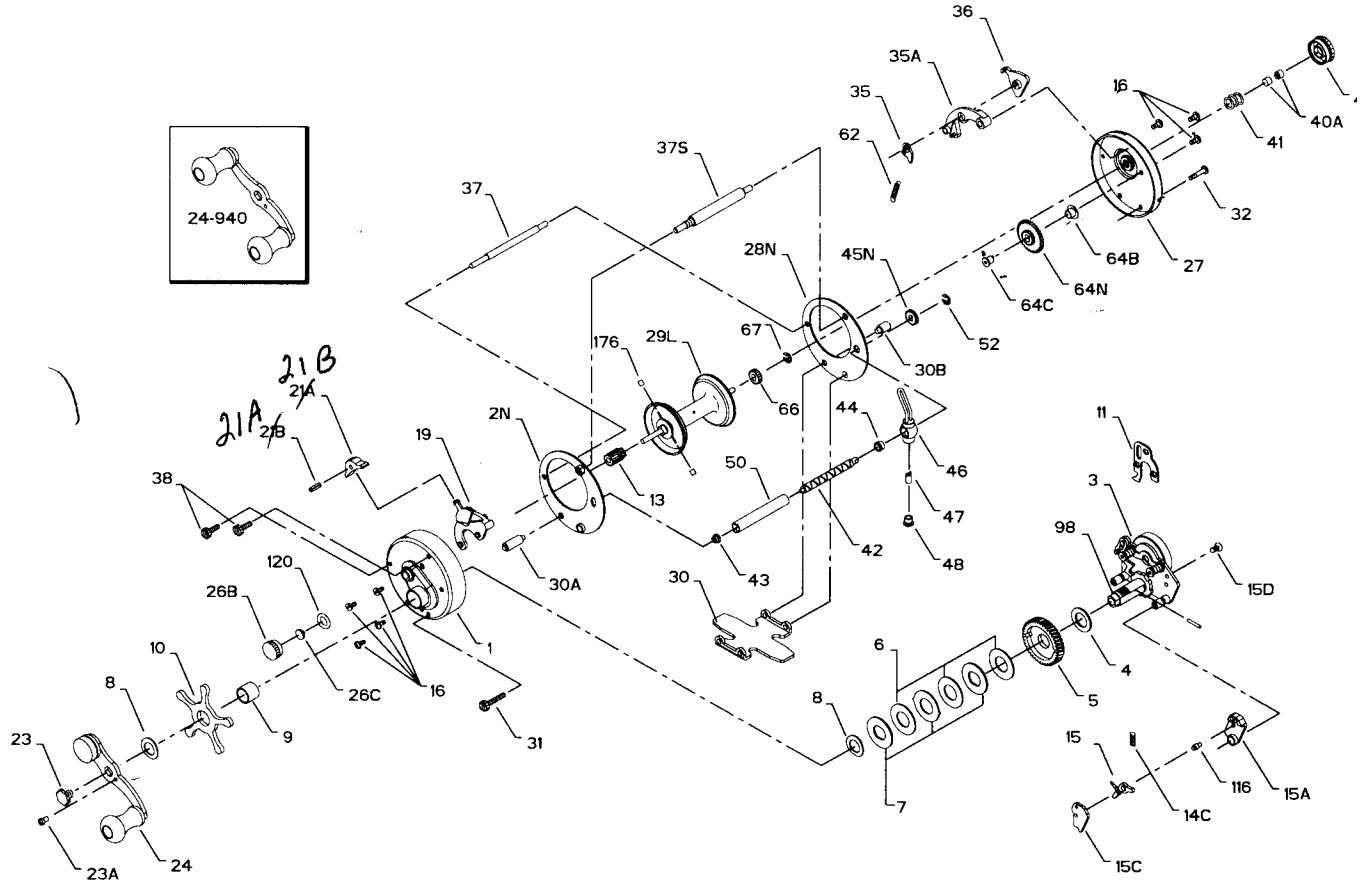




# PARTS AND PRICE LIST FOR LEVELMATIC 920, 930 AND 940



Key No.	Part No.	Description	Price
1	1-910	Right Side Plate	\$8.10
2N	2N-910	Right Side Ring	4.05
3	3-910	Bridge Assembly	8.00
4	4-910	Fiber Washer	.40
5	5-910	Main Gear	3.40
6	6-910	Drag Washer	.45
7	7-910	Metal Disc Set	1.05
8	8-910	Tension Spring	.80
9	9-910	Spacing Sleeve	.90
10	10-910	Star Drag Wheel	2.05
11	11-910	Eccentric Jack	1.70
13	13-910	Pinion Gear	3.70
14C	14-910	Dog Spring	.45
15	15-910	Dog	.90
15A	15A-910	Dog Housing	.50
15C	15C-910	Dog Cover	.50
15D	15D-910	Dog Cover Screw	.50
16	16-910	Bridge Screw	.50
19	19-910	Eccentric Lever	4.80
21A	21A-910	Lever Knob	1.70
21B	21B-910	Lever Knob Pin	.45
23	23-910	Handle Screw	1.60
23A	110-60	Handle Lock Screw	.40
24	24-920	Handle (920-930)	7.65
	24-940	Handle (940)	8.50
26	26-910	R.S. Ball Bearing	10.00
	26B-910	R.S. Bearing Cap	1.00
	26C-910	R.S. Spool Positioner	.45
	26D-910	R.S. Bearing Retainer	.50
27	27-920	Left Side Plate	8.10
	27-930	Left Side Plate	8.10
	27-940	Left Side Plate	8.10
28	28N-910	Left Side Ring	4.05
29L	29-910	Spool (920)	12.35
	29-930	Spool (930-940)	13.95
30	30N-910	Stand (920)	8.00
	30N-930	Stand (930-940)	8.80
30A	30A-910	R.S. Stand Spacer	.75
30B	30B-910	L.S. Stand Spacer	.75
31	31N-910	Stand Screw	.45

Key No.	Part No.	Description	Price
32	32-910	L.S. Stand Screw	.45
35	35-910	Click Tongue	.90
35A	35A-910	Click Support Block	1.50
36	36-910	Click Lever Cut Ecc.	3.10
37	37-910	Frame Post (920)	1.70
	37-930	Frame Post (930-940)	1.75
37S	58N-910	Slotted Line Guide (920)	1.75
	58N-910	Slotted Line Guide (930-940)	1.80
38	38-910	Post Screw	.80
40A	40A-910	Bearing Plunger	.80
40B	40B-910	L.S. Bearing Cup	2.00
41	41-910	L.S. Bearing Spring	.70
42	42-910	Worm (920)	2.15
	42-930	Worm (930-940)	2.15
43	43-910	R.S. Worm Bearing	.50
44	44-910	L.S. Worm Bearing	.50
45A	45A-910	Worm Drive Shaft	.90
45N	45N-910	Worm Gear	1.70
46	46-910	Line Guide	2.45
47	47-910	Pawl	.50
48	48-910	Pawl Cover Screw	.80
50	50-910	Worm Shield (920)	1.70
	50-930	Worm Shield (930-940)	1.70
52	52-910	Retaining Ring	.40
55	26-910	L.S. Bearing	10.00
*58A	58A-910	R.S. Post Nut	.40
62	62-910	Click Spring	.45
64B	64B-910	Idler Gear Bushing	.50
64C	64C-910	Idler Gear Shaft	.80
64N	64N-910	Idler Gear (New)	3.25
65	65-910	Shaft Screw	.45
66	66N-910	Drive Gear	1.50
67	67-9	Drive Gear Lock Spring	.40
98	98-910	Gear Sleeve	5.00
116	116-910	Dog Post	.60
120	120-910	"O" Ring	.50
159	159-910	Spring	.50
*173	173-910	L.S. Brg. Retainer	.50
*175	175-910	Light Brakes (2 req.) (Optional)	.90
176	179-910	Medium Brakes (2 req.)	.80
*177	177-310	Heavy Brakes (2 req.) (optional)	.80

\*Not Shown